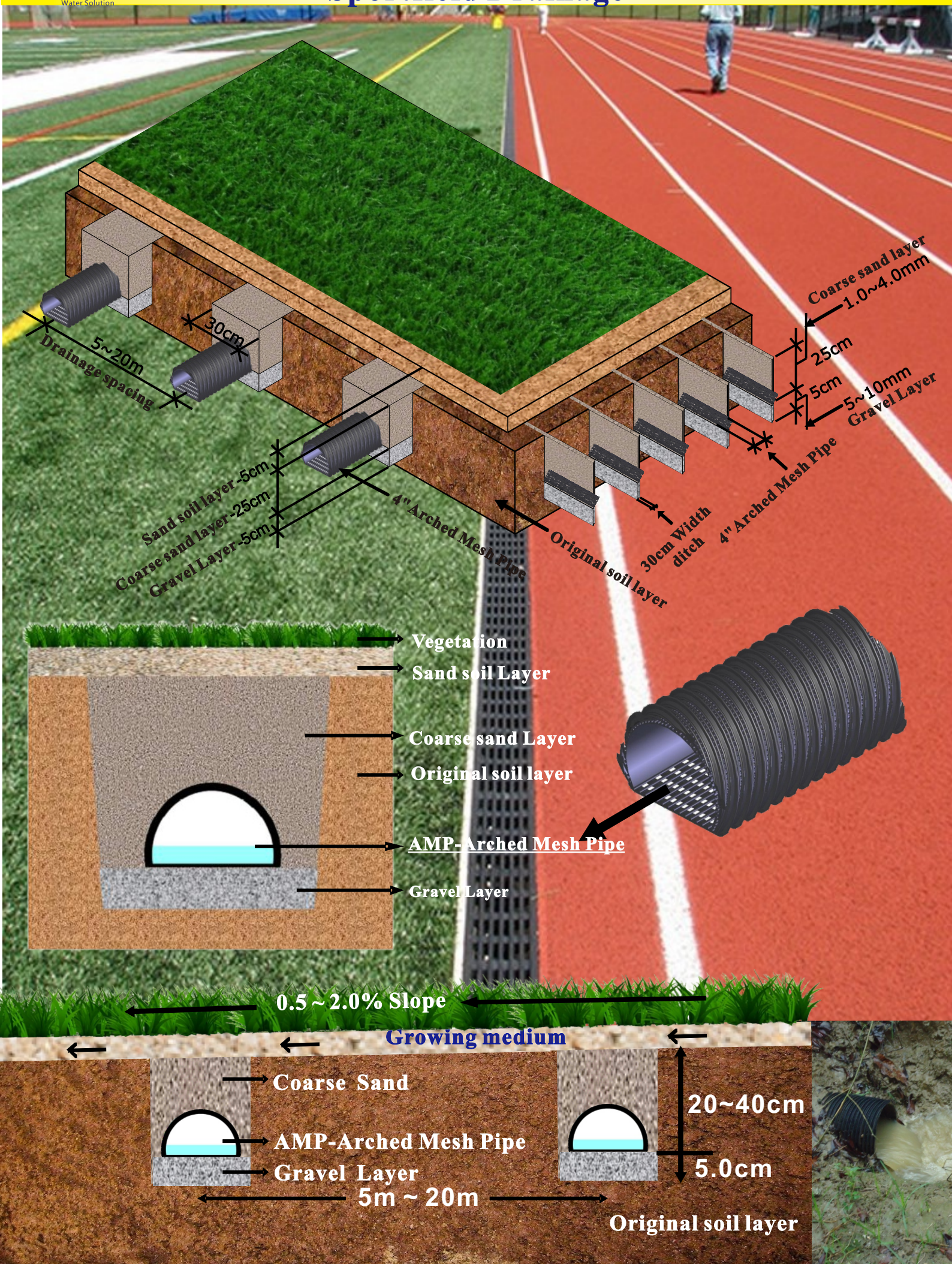




# AMPS-Arched Mesh Pipe System Sportfield Drainage

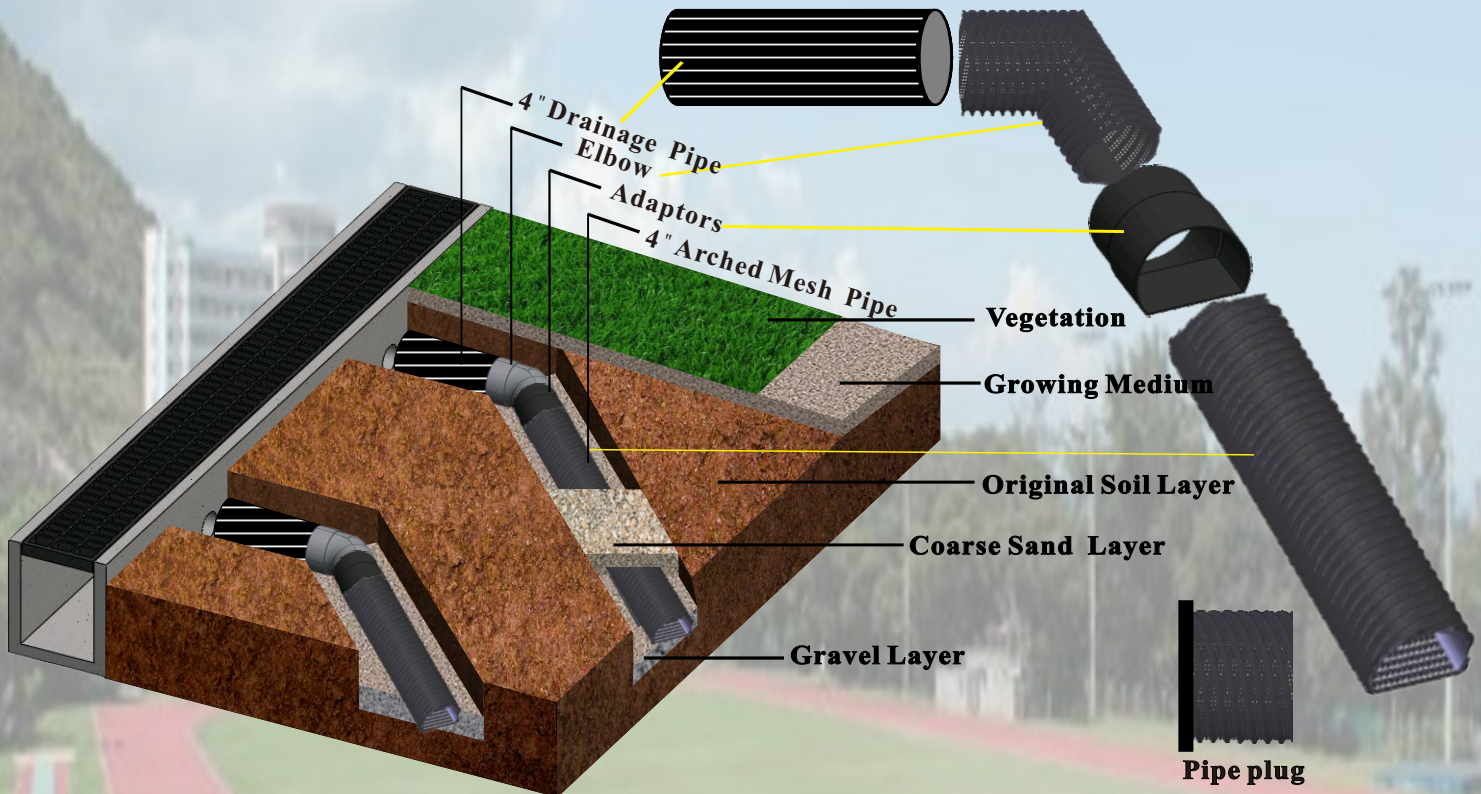




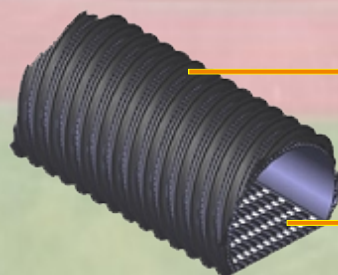
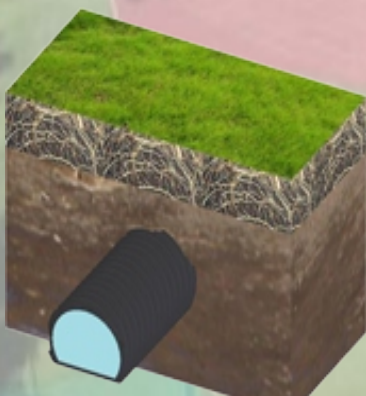
# AMPS-Arched Mesh Pipe System Sportfield Drainage



**AMPS-Arched Mesh Pipe System  
Sport field underground drainage  
Fishbone drainage design**



**AMP-Arched Mesh pipe provides the most economical and simple method for permeable drainage**  
In addition to the surface water discharge, the drainage system of the turf in the sports field is very important. The soil needs to be mainly sandy soil with water permeability, and the coarse sand layer under the sand must also have a suitable percolation drainage system and a gravel-grade cushion (enlarged water-permeable area), which will quickly ooze the water. It is discharged from the water pipe, so that it will not be muddy. Especially the grass is the most afraid of being trampled in the water. In addition to the potholes, the grass itself has a high damage rate.

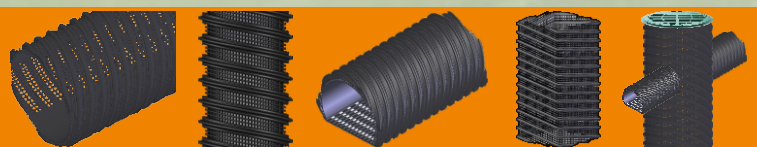


→ **Half moon shaped partial impervious layer**  
→ **The flat part is a mesh permeable layer downward**

The AMP- Arched mesh Pipe has no filtered water layer to hinder the permeable and drainage phenomenon, and the drainage function is particularly good.

## NAN YANG CHEMICAL CO., LTD

NO.199 LIU TZU LIN, SHUI SHANG CHIA-YI HSIEN, TAIWAN  
P. O. BOX 99 CHIAYI, TAIWAN  
TEL: 886-5-2357868 FAX: 886-5-2357868  
<http://www.southsun.com.tw>  
E-mail :southsun@southsun.com.tw



SPECIALIZE IN EXTRUDED NETTING AND MESH PIPE